

FOR YOUR SAFETY USE

This content explains important notices for all the users to use this product safety. Read the content carefully before using, and follow the instruction.

▲ WARNING

- * Do not moisten inside of the appliances. It may cause fire or electric shock. If the incident occurs, shut off the power supplied to the lens immediately.
- * Do not look at any sorts of strong illuminant such as the sun through the lens. Eyes could be harmed.

● CAUTION

- * Before supplying the power to the lens, make sure all the parts are connected correctly.
- * In order to install or release the lens cable, be sure to hold the joint part. Do not pull it off nor twist it, or it may get damaged. It may cause fire or electric shock.
- * Do not leave or store the lens under direct sunshine. The lens may condense light on a near-by object, and cause a fire.
- * If any sorts of incidents such as unusual smoke, noise, smell or obstacles are found, shut off the power supplied to the lens and pull out the lens cable immediately. Please notify service department as soon as possible.
- * Do not remodel the instrument without permission: it may impair the functions of product or cause electric shock. Please contact our sales agent or service department if remodeling is necessary.

NOTICES:

Lens and its accessories are extremely precise instrument, then be sure not to apply the strong impacts to them.

- 1) There may be a case that the glasses of the lens mist when the lens is carried from a cool place to a place of high temperature and high humidity. To avoid a mist on the glasses, before moving the lens, let the lens adjust to the ambient temperature of the place where the lens will be used.
- 2) For safe storage of the lens, avoid hot or humidity place, and avoid place containing corrosive gas or salt.
- 3) Put the cap on the lens while the camera is not used for a long time.

MOUNTING THE LENS

Press the threaded portion of the lens mount against the threaded portion of the camera mount, slowly rotate the lens clockwise, and screw in the lens mount to be installed on camera.

Note: The lens mount is equipped with a slip mechanism. To change rotational position of the lens, strongly rotate the lens clockwise further. If the lens reaches the stopper and cannot be thereby rotated, rotate in counterclockwise slowly until it reaches the required position.

ZOOM OPERATION

Note: After a zoom operation, you will need to focus.

- 1) Loosen the zoom tightening knob.
- 2) Rotate the zoom ring to select the appropriate field angle. Rotate the ring to “W” side to set the zoom to wide; rotate the ring to “T” side to set the zoom telephoto.
- 3) Adjust the focus referring to: “FOCUS OPERATION.”
- 4) Tighten the zoom tightening knob.

FOCUS OPERATION

- 1) Loosen the focus tightening knob.
- 2) Rotate the focus ring to adjust the focus. Rotate the ring to “F” side to set the focus to infinity; rotate the ring to “N” side to set the focus to near.
- 3) Tighten the focus tightening knob

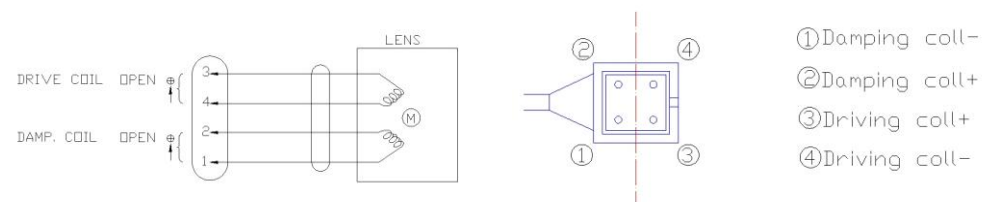
FLANGE FOCAL ADJUSTING

When you cannot get the lens in focus in spite of repeated focusing operations, follow the following procedures to adjust the flange focal length on the camera.

- 1) Set the lens iris open.
- 2) Set the zoom at the wide end and the focus at the near end.
- 3) Operate the flange focal length adjustment mechanism on the camera, and the focus on an object at 0.3m from the lens.
- 4) Confirm the focus at telephoto end, around the middle, and at wide end throughout the zoom. (If you cannot get the focus in spite of the above procedures, try again.)

IRIS DRIVER

- 1) control: auto (DC/VIDEO)
- 2) coil resistance : drive coil $190\Omega \pm 10\%$ damping coil $500\Omega \pm 10\%$
- 3) operating current: AT 3V DC



MAINTENANCE OF THE LENS

A special coating has been applied on the lens surface in order to prevent light reflection. Dirty lens surface due to “dust”, “oil”, “finger print” cause harmful flare which result in degenerating lens property. Dirt may cause mold or scorches on the lens. Whenever the lens is found to be dirty, clean the lens as instructed below.

- 1) To remove dust on the lens
 - * Brush “trash” or “dust” off with an oil-free soft brush or a blower-brush (photography use).
- 2) To remove oil on the lens.
 - * Wipe water drops or oil off the lens with a clean soft cloth and dry the lens surface. Then prepared oil-free and washed-out cotton cloth or lens cleaning paper with alcohol for disinfection or lens cleaning liquid.
 - * Wipe the rest of the dirty off gently with the cloth or paper by moving spirally from the lens center towards its rim. Repeat wiping with another cloth or paper until the lens becomes completely clean.

安全使用说明书

以下内容向使用者诠释如何安全使用产品，在使用之前务必认真阅读：

▲ 警告

- * 请勿弄湿镜头内部，否则可能引起起火或短路。如果发生事故，请立刻关闭供应镜头的电源。
- * 请勿通过镜头看任何强光源，例如太阳，这样容易导致眼睛受伤。

● 注意

- * 在给镜头供电之前，请务必检查所有部件是否连接正确；
- * 为了安装或拆除镜头线，务必握紧连接端子，不要拉扯，扭曲连接线，这样可能会引起起火或短路；
- * 请勿在正对阳光下放置或使用，这样镜头可能聚焦阳光，从而导致起火；
- * 如果发现任何异常现象，如异常烟雾，噪音，气味或其他故障，立刻关闭供应镜头的电源及拔出镜头线，并联系我们。

注意事项：

- * 镜头属于精密光学产品，请避免在强烈震动环境下使用；
- * 当镜头从阴凉处移到高温或潮湿之处，镜片可能会起雾；为了避免镜片起雾模糊，在使用镜头之前，请注意环境温度差；
- * 为了安全存放镜头，请避免高温、潮湿、含有腐蚀性气体或高盐度环境；
- * 当长时间没使用摄像机时，请把镜头盖上盖子。

镜头安装使用

把镜头螺纹部分安装到摄像机螺纹部分，慢慢顺时针旋转，然后拧紧。

（注：镜头接口装有打滑机构。为了改变镜头位置，进一步地顺时针用力旋转镜头。如果镜头碰到止动装置而不能旋转时，再逆时针慢慢地旋转直到需要的位置。）

（一） 变倍操作（注意：变焦镜头，变倍后需要重新聚焦。）

- 1) 松开变倍锁紧钉；
- 2) 旋转变倍环选择适当的视场角。把环旋转到“W”侧，变倍至广角；旋转到“T”，变倍至长焦；
- 3) 调节聚焦请参照“聚焦操作”；
- 4) 拧紧变倍锁紧钉。

（二） 聚焦操作

- 1) 松开聚焦锁紧钉；
- 2) 旋转聚焦环调整聚焦。把聚焦环旋转到“F”侧，聚焦于无穷远；旋转到“N”，聚焦于近处；
- 3) 拧紧锁紧钉。

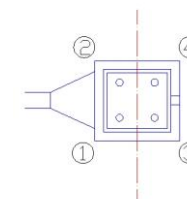
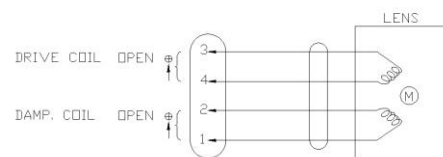
（三） 调节后焦距

如果聚焦无法得到清晰的图像，请按照下面的方法调节摄像机后焦距。

- 1) 把镜头光圈设置为打开；
- 2) 把变倍环旋至 W 端，聚焦环旋至 N 端；
- 3) 调节镜头后焦距，使物像在 0.3m 内聚焦清晰；
- 4) 确认聚焦在长焦、中焦、短焦清晰。（如果仍然无法聚焦清楚，请重复以上操作。）

（四） 光驱

- 1) 控制：自动（直流/视频）
- 2) 线圈电阻： 驱动 190Ω ± 10%
 制动 500Ω ± 10%
- 3) 工作电压： AT 3V DC。（注：在驱动线圈正极端加上正电压时光圈将打开）



- ① Damping coil-
- ② Damping coil+
- ③ Driving coil+
- ④ Driving coil-

（五） 镜头维护

在镜头表面采用专门的光学镀膜，防止光线反射。镜头表面肮脏，如灰尘、油脂、指纹，将造成镜头性能衰退，使镜头产生眩光。而且污垢可能使镜头表面发霉或褪色。

清洁镜头步骤如下：

- 1) 清除镜头表面的灰尘：
 - * 用无油软刷或气刷（摄影用的）刷去碎屑和灰尘。
- 2) 清除镜头表面的油脂：
 - * 用干净的软布擦拭水滴和油脂，吹干镜头表面，然后用含有酒精且不褪色的脱脂棉布、镜头清洁纸以及镜头清洗液消毒；
 - * 从镜头中心到边缘的地方用布或纸轻轻地擦拭，再用另一布或纸重新擦拭直到镜头完全干净。

中联科创保修卡

用户名称：_____

详细地址：_____

电话：_____ 传真：_____

E-mail _____

产品型号 (Model) : _____ 产品编号 (Sei) : _____

生产日期： 年 月 日 购买日期： 年 月 日

如有您有其他需求，请在下面填写。